



Cherokee Scouter

March 2006

In this issue.....

- ❖ *Scouting for Food*
- ❖ *Good Turn for America*
- ❖ *Friends of Scouting*
- ❖ *OA Spring Fellowship*
- ❖ *Council Banquet*
- ❖ *OA Section Conclave*
- ❖ *NOAC*
- ❖ *Key Dates*

Scouting for Food - Bartlesville 800 bags of food collected

Sixteen units participated in this year's Scouting for Food campaign in Bartlesville.



Cub Scout Packs participating included Pack 10 (First United Methodist Church), Pack 25 (Ochelata United Methodist Church), Pack 108 (Hoover Elementary School), and Pack 150 (Wayside Elementary School).

Troops participating included Troop 1 (First Christian Church), Troop 2 (First United Methodist Church), Troop 3 (First Presbyterian Church), Troop 5 (St. John Church), Troop 21 (Grace Community Church), Troop 23 (Disciples Christian Church), Troop 32 (First Wesleyan Church), Troop 101 (Latter-Day Saints Ward 1), Troop 104 (Good Shepherd Church), Troop 114 (Latter-Day Saints Ward2), and Troop 2000 (Redeemer Lutheran Church).

Food collected was distributed to the CONCERN and Salvation Army food banks.



Good Turn for America

Don't forget to record community service projects at the [Good Turn for America web site](#). Call the Scout Office (918-336-9170 or toll Free: 888-269-1328) if you need instructions for your unit's account information.

CHEROKEE AREA COUNCIL
SERVICE CENTER AND
SCOUT SHOP
121 SE ADAMS BLVD.
BARTLESVILLE OK
74003-4925

PHONE: 918-336-9170
FAX: 918-336-6407
TOLL FREE
888-269-1328

[HTTP://WWW.CHEROKEESBSA.ORG](http://www.cherokeesbsa.org)

March 2006

Friends of Scouting

The Council has raised 68% of its goal in this year's Friends of Scouting campaign. That's great – but we need to keep the momentum going to reach and exceed this year's goal! The money raised goes towards the Council operating budget.



Remember that a unit FOS presentation is one of the requirements for free rank advancement badges. Contact the Scout Office (918-336-9170 or toll Free: 888-269-1328) to schedule a unit presentation.

Page 1

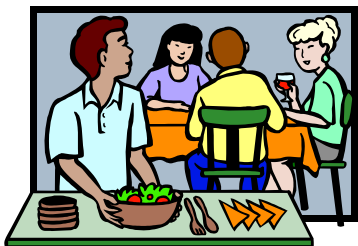
OA Spring Fellowship March 24-26, Camp McClintock

The Washita Lodge Spring Fellowship will be held at Camp McClintock, March 24-26. Arrival and check-in begins at 7 PM on March 24th.



Early-bird registration (\$15) is due at the Scout Office by March 10th. The [registration forms](#) are available on the [Lodge web site](#) and in the February 2006 issue of the Washita Warrior which was mailed to Lodge members.

Council Banquet April 4, 6:30 PM, Bartlesville Elk's Club



The Council's Annual Recognition Banquet will be held on April 4th at 6:30 p.m. at the Bartlesville Elk's Club. Cost is \$12.50 per person.

The Silver Beaver will be awarded and recent Eagle Scouts will be honored. An Eagle Scout can be sponsored for \$25.

Registration and payment is required at the Scout Office no later than Tuesday, March 28th.

OA Section Conclave



April 21-23

Slippery Falls Scout Ranch
Tishimingo, Oklahoma



[NOAC 2006](#) will be held at Michigan State in East Lansing Michigan. The event will run from July 29–August 3, 2006.

A \$100 deposit is required, payable at the Scout Office. It is estimated that the total cost of the event will be ~\$450, depending on transportation costs, and if there are any stops planned during the trip. When the lodge receives further info, a payment schedule will be announced.

Upcoming Key Dates

- Mar. 24-26 – OA Spring Fellowship, Camp McClintock
- Apr. 4 – Council Banquet, Elks Lodge Bartlesville
- Apr. 8 – BALOO Training at Pawhuska Trout Out
- Apr. 8-9 – Boy Scout Leader Training at Pawhuska Trout Out
- Apr. 21-23 – OA Section Conclave, Slippery Falls Scout Ranch OKC
- Apr. 28-30 – Spring Camporee, Camp Cherokee
- May 13 – Cub Advancement & Fun Day and Cub-n-One, Camp Cherokee
- May 31-June 3 – OH Cub Day Camp
- June 21-23 – GL Cub Day Camp

CHEROKEE AREA COUNCIL
SERVICE CENTER AND
SCOUT SHOP
121 SE ADAMS BLVD.
BARTLESVILLE OK
74003-4925

PHONE: 918-336-9170
FAX: 918-336-6407
TOLL FREE
888-269-1328

[HTTP://WWW.CHEROKEEBSA.ORG](http://www.cherokeebsa.org)